

Wyrallah Road Public School Safe Vehicle Arrivals and Departures

Car Park Drop-Off / Pick-Up Zone

Guidelines

The purpose of the car park drop-off and pick-up area is to ensure safe and efficient arrivals and departures.

To enable this to happen please read and adhere to the following information:

- While the speed limit in school zones is enforced at 40km/hr we respectfully ask that you limit your speed to 10 km/h whilst in Nielson Street and within our school car park. Please **SLOW DOWN**.
- Please **do not** queue across the Elizabeth/Nielson Street crossroad at any time. The best way to join the queue is to **enter on the bottom side of Elizabeth Street**. Please **queue as far left as possible**, allowing room for non-school traffic to carefully pass by.

After entering into Nielson Street via Elizabeth Street please observe the following instructions;

- **Do not park** on the left hand side of the street - traffic entering the school is to **queue as far left as possible**.
- Please **plan ahead**. If you require parking, arrive early enough to obtain a park before the queue forms.
- Once you are in the drive-thru queue, **do not overtake at any time** – this access is for emergency vehicles, taxis and authorised vehicles **only**.
- **Do not pull out of the line at any time** – unless when you get to Eastside Place you wish to turn left in order to park. NB parking is limited in this street.
- Upon entering the school gates respect the staff members on duty at the crossing. **Always watch for pedestrians**.
- When in the drive-thru queue, **do not leave your vehicle at any time** and **do not use mobile phones**. Please obey RMS/police enforced road rules at all times. This includes ensuring your child's seat belt is fastened before driving off; having children in booster seats (where applicable) and ensuring children under the age of 7 **do not** sit in the front seat of the vehicle.

Correct ✓



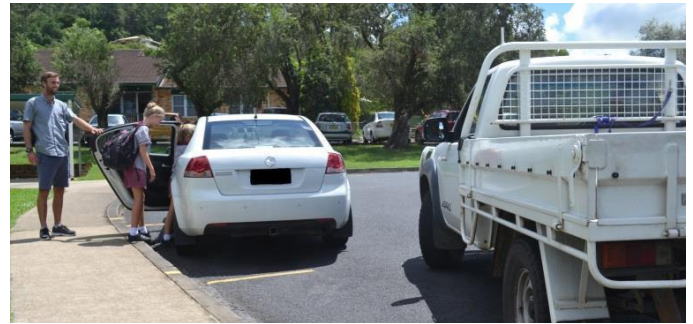
Incorrect





- Keep the drive-thru queue moving by unloading/loading 5 cars at a time. Please drive up to the first waiting bay opposite the fire hydrant. Once again, **do not pull out of the line at any time**. Be patient and continue following the queue out of the school. Please watch for pedestrians at all times.
- Due to the high volume of traffic moving around the car park, it is not recommended to park in the WRPS car park at this busy time of day. However, if it is unavoidable a parent or guardian must physically escort each child. This means you must park in a marked area and leave your car to collect your child. No child should be walking on an asphalt area unaccompanied by an adult.
- If parents arrange pick up of their children from areas in streets surrounding WRPS, they assume responsibility for their safety. Normal traffic regulations apply to both pedestrians and drivers in those situations. (It is illegal for cars to park in the bus zone).
- In the interests of Nielson Street and Eastside Place residents, please be considerate by **not parking in or over driveways**, or block rubbish bins from being collected.
- Above all else, please be courteous to each other and to our WRPS friends and neighbours. Staff are on duty every day to guide and assist you whilst using the car park.

Incorrect 



Displaying a name sign in your window will help staff to quickly identify the child being picked up and will keep the traffic flowing.

SCHOOL HOURS

Children must not arrive at school before 8.30am and must be picked up prior to 3.15pm. Teachers are not on duty outside of these times, therefore we request that you adhere to our pick up and drop off times. This includes children who ride or walk to school.

Please note that if you are unable to pick up your child by 3.15pm, they must be booked into our Outside School Hours Care. Please call the Director, 0448 125 995 to book a place for your child.

If you have any questions or concerns, please do not hesitate to contact the school office on 6621 3363.

Thank you for your co-operation in helping to make Wyrallah Road Public School a safer place for everyone.

Sincerely,

Gareth Hockings
Principal